

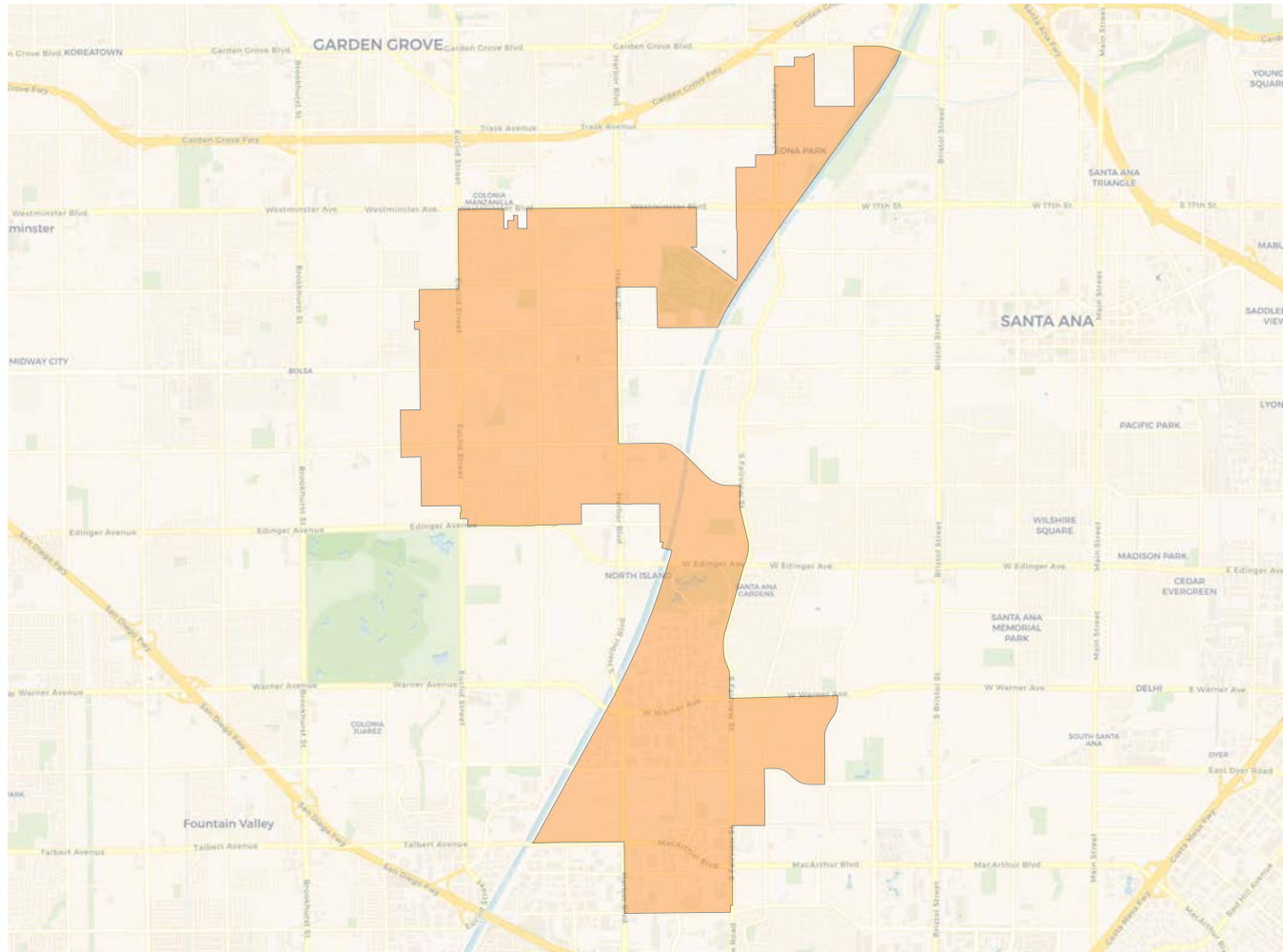
2020 Census

	A	B	C	D	E	F
Population	52,223	52,241	51,993	52,006	51,455	51,735
Deviation	281	299	51	64	-487	-207
Deviation %	0.5%	0.6%	0.1%	0.1%	-0.9%	-0.4%
Other	4,442	8,724	11,953	1,493	3,667	2,003
Other %	8.5%	16.7%	23.0%	2.9%	7.1%	3.9%
Latino	28,200	35,182	35,842	47,265	44,508	48,071
Latino %	54.0%	67.3%	68.9%	90.9%	86.5%	92.9%
Asian	19,162	7,615	3,580	2,839	2,725	1,563
Asian %	36.7%	14.6%	6.9%	5.5%	5.3%	3.0%
Black	419	720	618	409	555	98
Black %	0.8%	1.4%	1.2%	0.8%	1.1%	0.2%

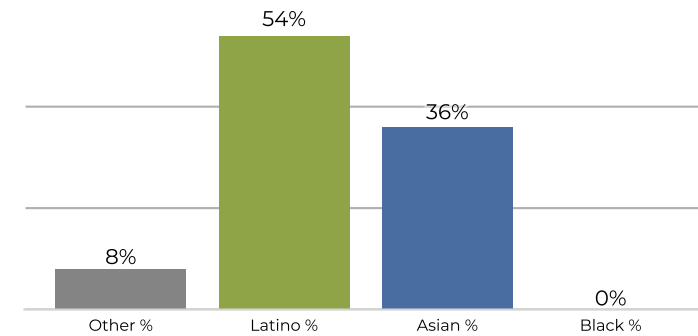
Citizen Voting Age Population (CVAP)

	A	B	C	D	E	F
Total CVAP	31,241	32,136	29,177	19,947	19,276	22,575
Other CVAP	4,374	8,694	11,421	950	3,157	2,008
Other CVAP %	14.0%	27.1%	39.1%	4.8%	16.4%	8.9%
Latino CVAP	12,999	17,645	14,690	16,345	14,187	18,997
Latino CVAP %	41.6%	54.9%	50.3%	81.9%	73.6%	84.2%
Asian CVAP	13,634	5,074	2,425	2,232	1,629	1,508
Asian CVAP %	43.6%	15.8%	8.3%	11.2%	8.5%	6.7%
Black CVAP	234	723	641	421	303	62
Black CVAP %	0.7%	2.3%	2.2%	2.1%	1.6%	0.3%

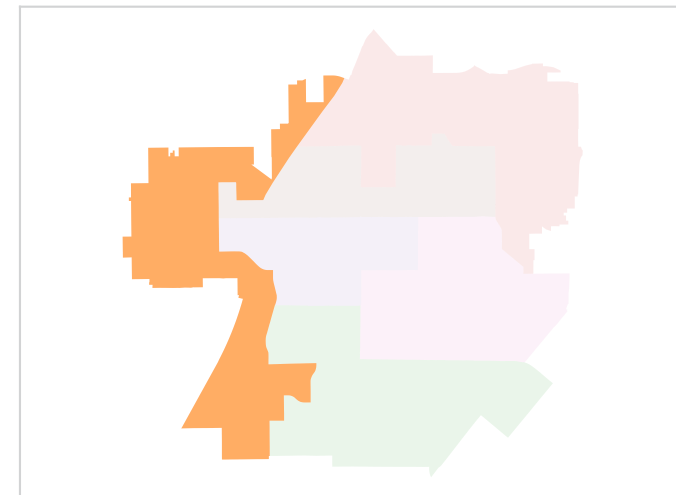
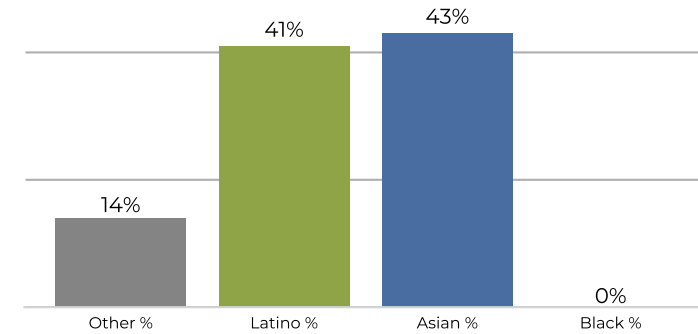
District A



2020 Census

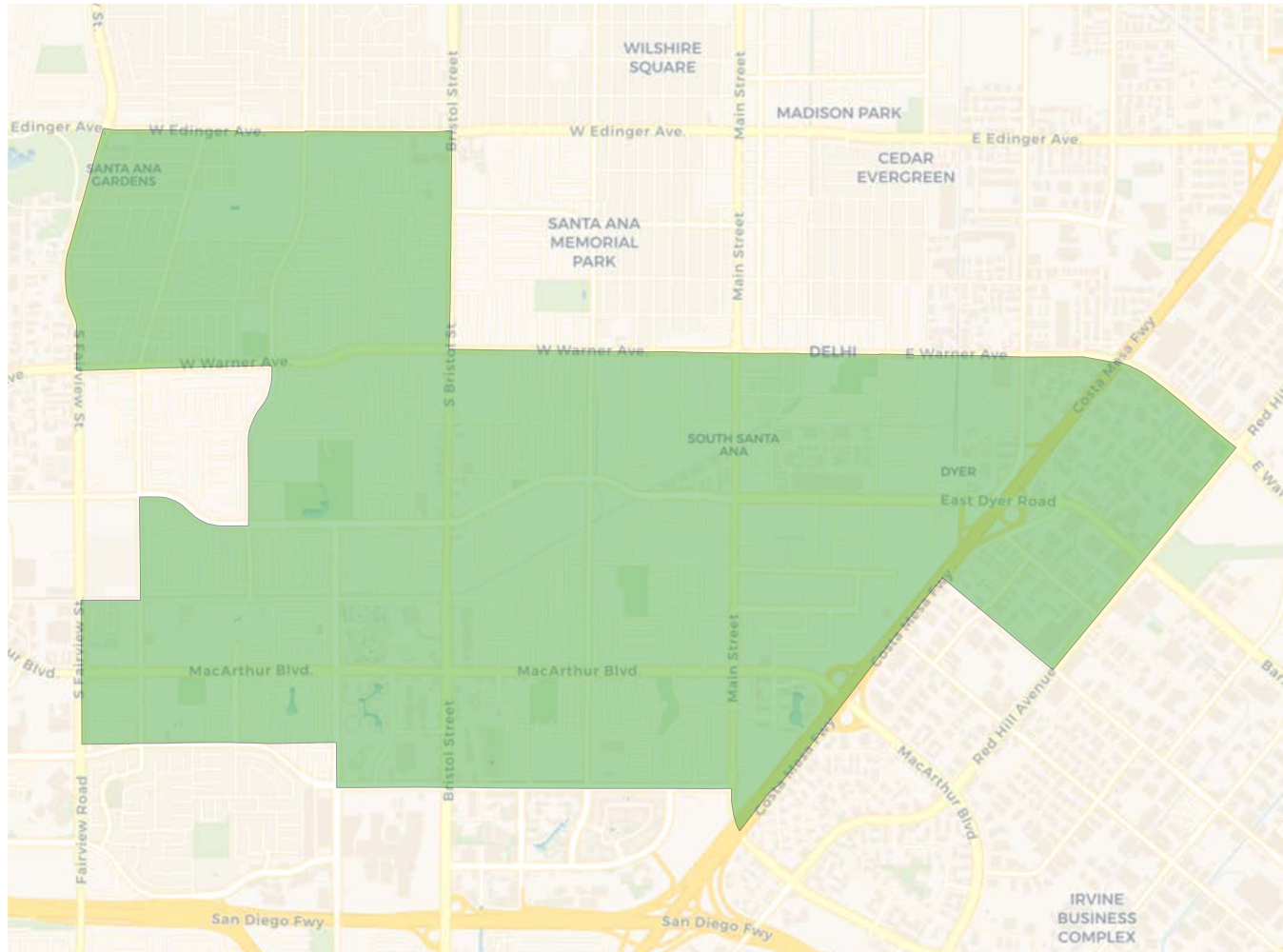


Citizen Voting Age Population

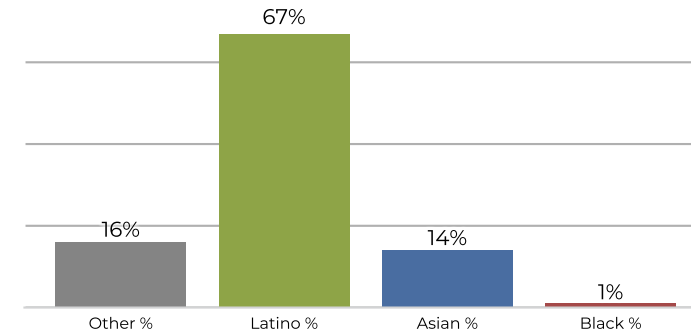


Population	Deviation	Deviation %	Other	Other %	Latino	Latino %	Asian	Asian %	Black	Black %
52,223	281	0.5%	4,442	8.5%	28,200	54.0%	19,162	36.7%	419	0.8%
Total CVAP	Other CVAP	Other CVAP %	Latino CVAP	Latino CVAP %	Asian CVAP	Asian CVAP %	Black CVAP	Black CVAP %		
31,241	4,374	14.0%	12,999	41.6%	13,634	43.6%	234	0.7%		

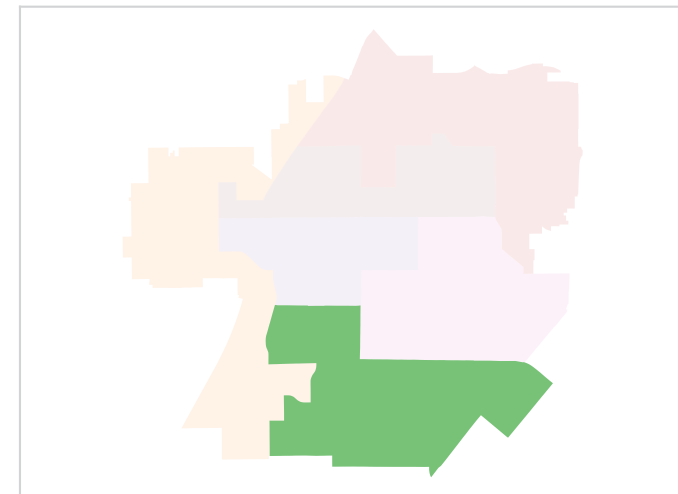
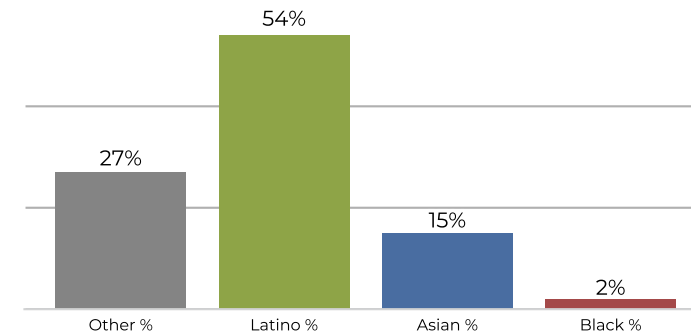
District B



2020 Census

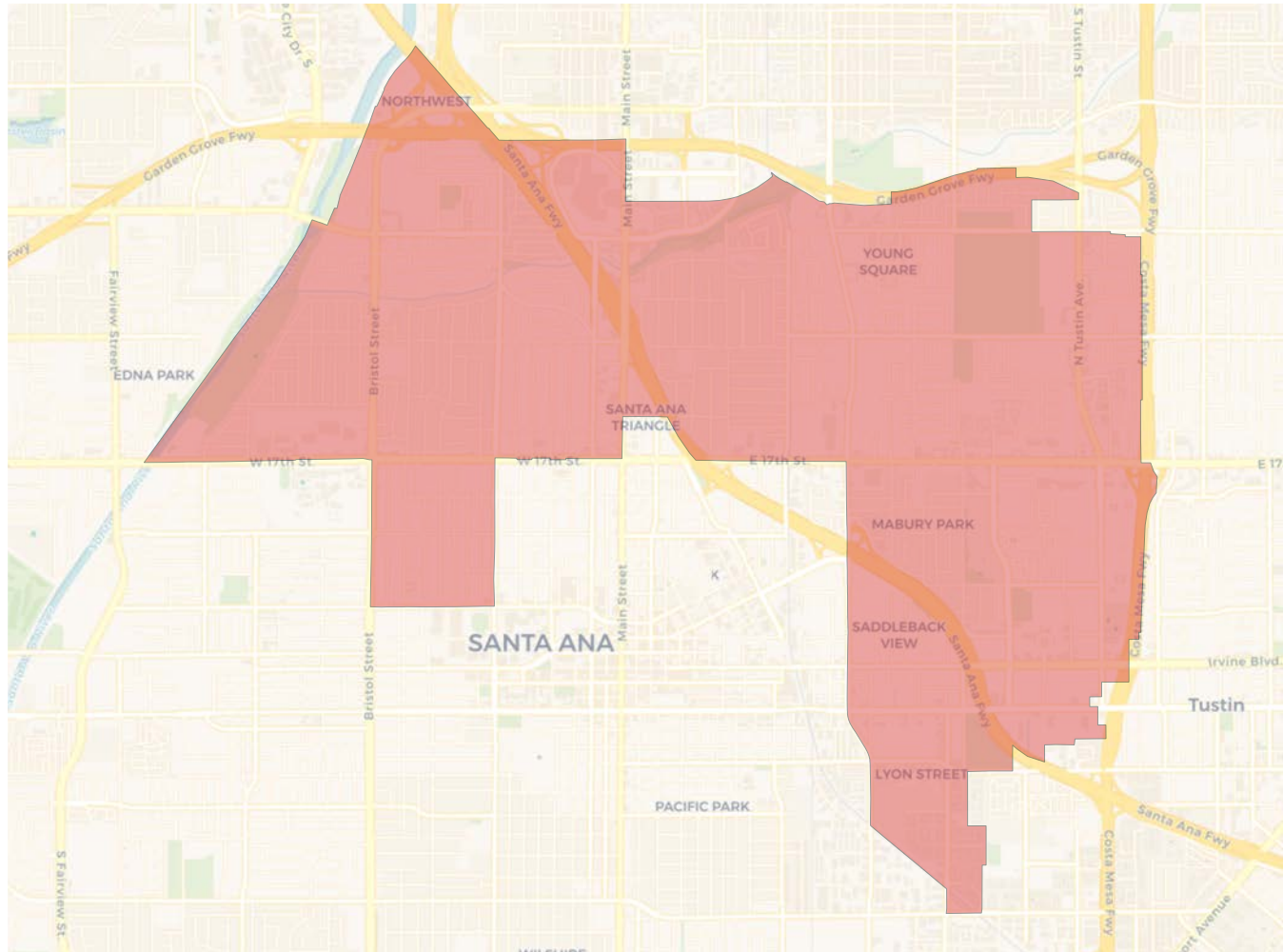


Citizen Voting Age Population

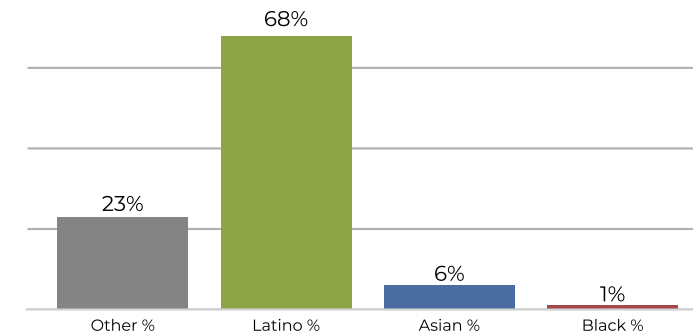


Population	Deviation	Deviation %	Other	Other %	Latino	Latino %	Asian	Asian %	Black	Black %
52,241	299	0.6%	8,724	16.7%	35,182	67.3%	7,615	14.6%	720	1.4%
Total CVAP	Other CVAP	Other CVAP %	Latino CVAP	Latino CVAP %	Asian CVAP	Asian CVAP %	Black CVAP	Black CVAP %		
32,136	8,694	27.1%	17,645	54.9%	5,074	15.8%	723	2.3%		

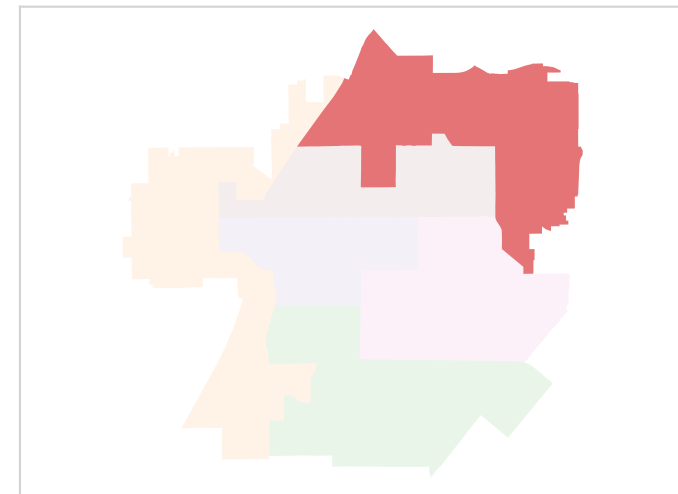
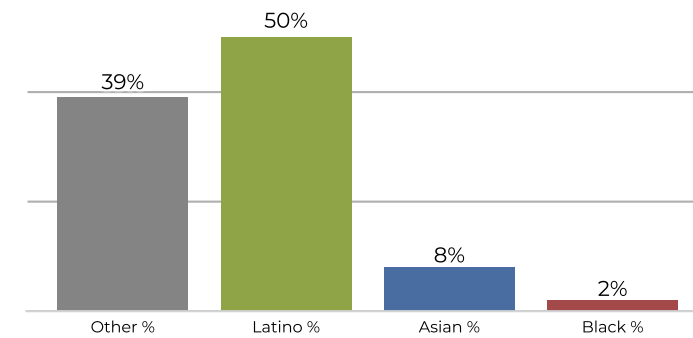
District C



2020 Census



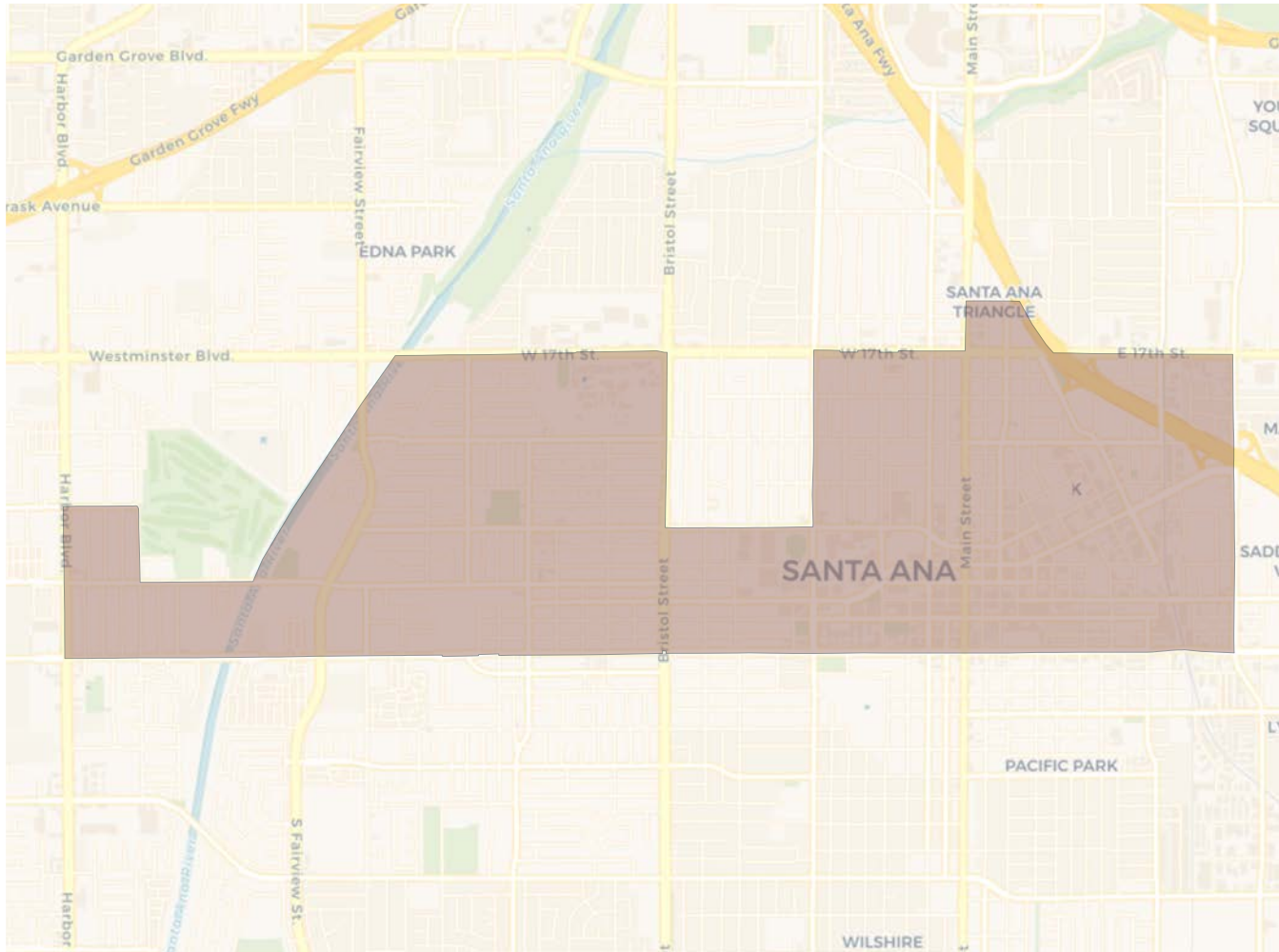
Citizen Voting Age Population



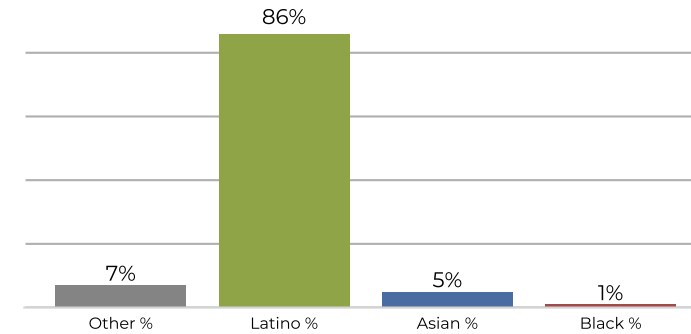
Population	Deviation	Deviation %	Other	Other %	Latino	Latino %	Asian	Asian %	Black	Black %
51,993	51	0.1%	11,953	23.0%	35,842	68.9%	3,580	6.9%	618	1.2%
Total CVAP	Other CVAP	Other CVAP %	Latino CVAP	Latino CVAP %	Asian CVAP	Asian CVAP %	Black CVAP	Black CVAP %		
29,177	11,421	39.1%	14,690	50.3%	2,425	8.3%	641	2.2%		

Population	Deviation	Deviation %	Other	Other %	Latino	Latino %	Asian	Asian %	Black	Black %
52,006	64	0.1%	1,493	2.9%	47,265	90.9%	2,839	5.5%	409	0.8%
Total CVAP	Other CVAP	Other CVAP %	Latino CVAP	Latino CVAP %	Asian CVAP	Asian CVAP %	Black CVAP	Black CVAP %		
19,947	950	4.8%	16,345	81.9%	2,232	11.2%	421	2.1%		

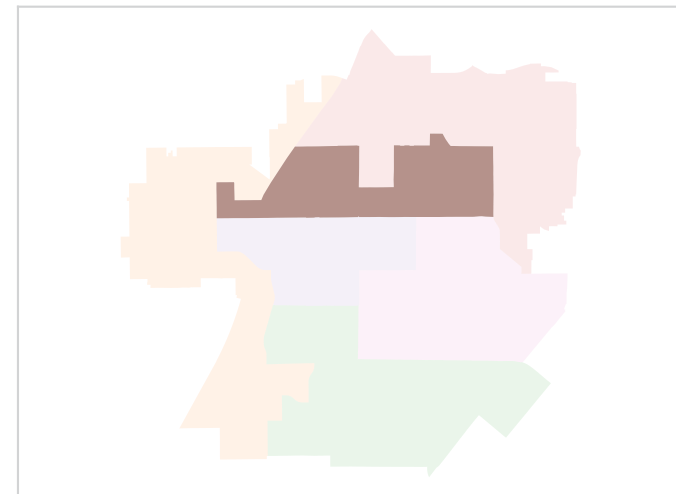
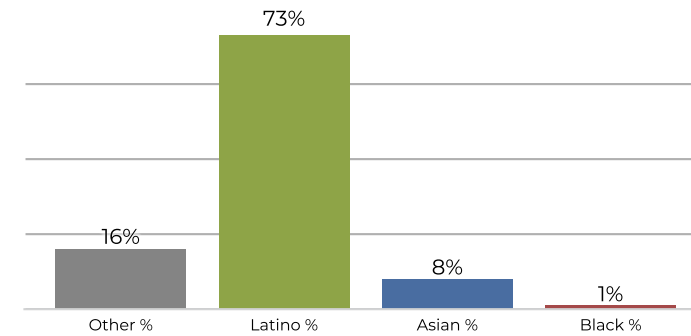
District E



2020 Census

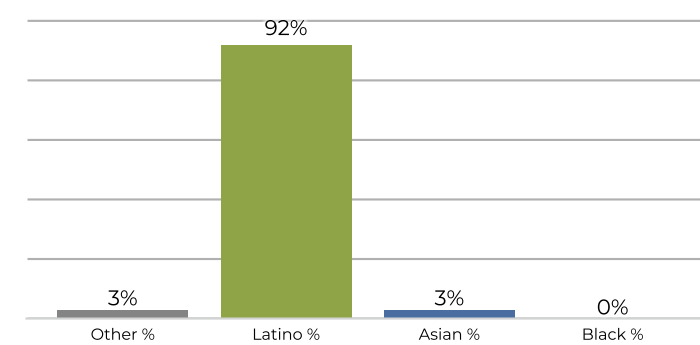


Citizen Voting Age Population



Population	Deviation	Deviation %	Other	Other %	Latino	Latino %	Asian	Asian %	Black	Black %
51,455	-487	-0.9%	3,667	7.1%	44,508	86.5%	2,725	5.3%	555	1.1%
Total CVAP	Other CVAP	Other CVAP %	Latino CVAP	Latino CVAP %	Asian CVAP	Asian CVAP %	Black CVAP	Black CVAP %		
19,276	3,157	16.4%	14,187	73.6%	1,629	8.5%	303	1.6%		

2020 Census



Ethnicity	Percentage
Latino	84%
Other	8%
Asian	6%
Black	0%

Population	Deviation	Deviation %	Other	Other %	Latino	Latino %	Asian	Asian %	Black	Black %
51,735	-207	-0.4%	2,003	3.9%	48,071	92.9%	1,563	3.0%	98	0.2%
Total CVAP	Other CVAP	Other CVAP %	Latino CVAP	Latino CVAP %	Asian CVAP	Asian CVAP %	Black CVAP	Black CVAP %		
22,575	2,008	8.9%	18,997	84.2%	1,508	6.7%	62	0.3%		